



cassini
AMBIENT

A formidable
connection



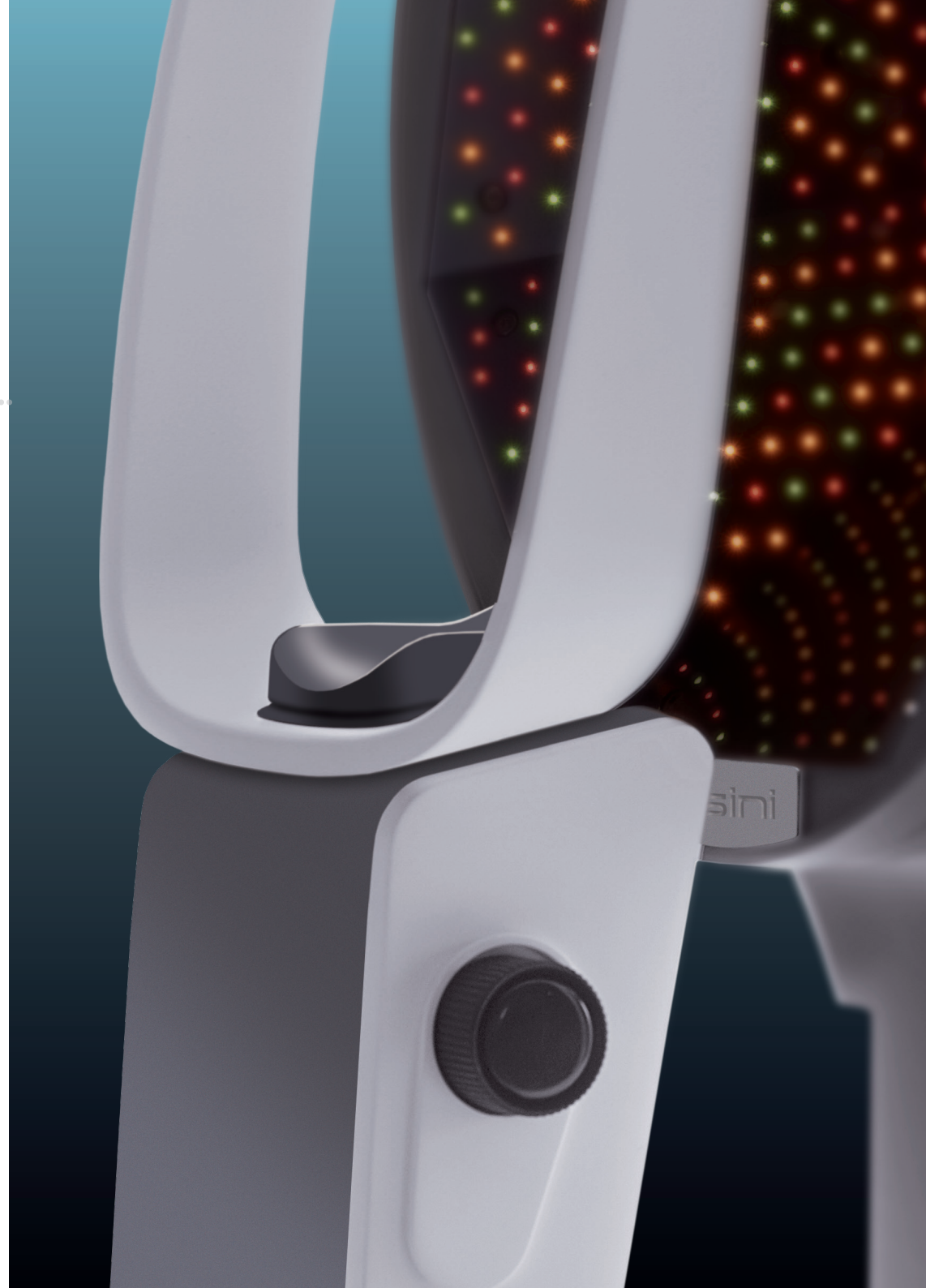
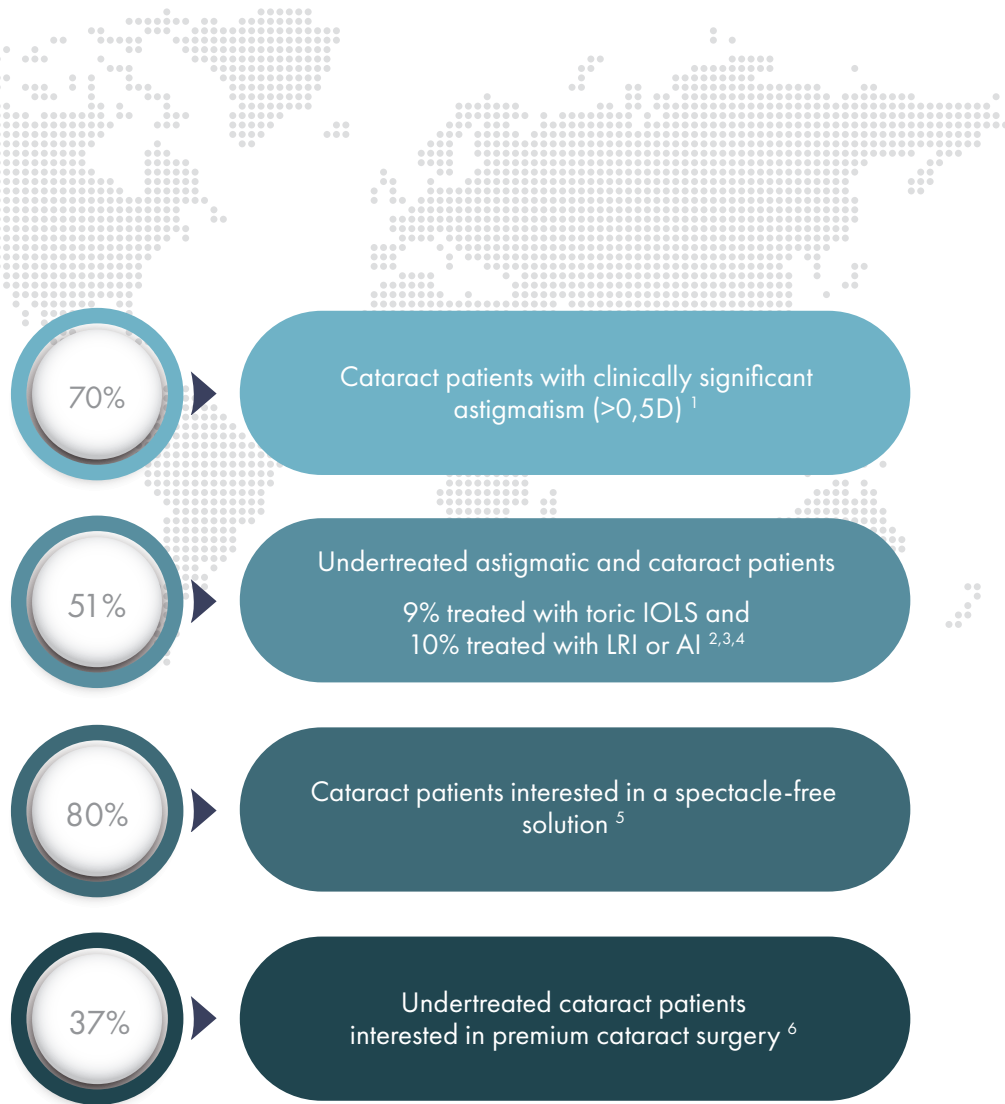
Driven by insatiable curiosity, the love of science and passion for vision, Cassini has been dedicated to pushing the boundaries on personalized, thorough and accurate corneal diagnostic solutions for well over a decade.

Independently, and in collaboration with our vision-care partners, we strive to make the gift of lifelong sight accessible and possible the world over.

As innovative and progressive thought-leaders, we empower surgeons with the efficient, user-friendly tools, collaboration and support they need to make confident decisions for optimal outcomes. We care, and we love those who care as much as we do. Our partners in vision-care share our beliefs and together we are a formidable connection.



THE CLINICAL NEED TO MANAGE ASTIGMATISM



THE PROVEN WAY TO MAXIMIZE SUCCESS

The evolved and all-new Cassini Ambient assesses ocular surface stability, measures the posterior cornea, and detects corneal irregularities with LED topography.

SPEED

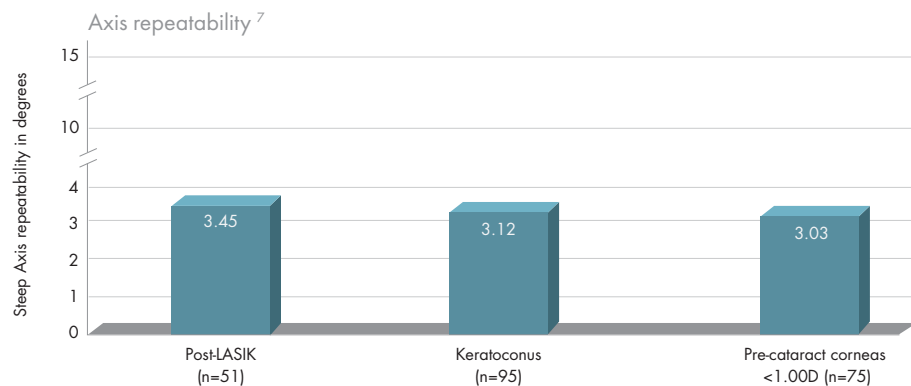
- Ambient illumination for ultimate patient comfort
- Seamless imaging for FLACS connectivity
- Instantaneous capturing of all measurements on visual axis

EFFICIENCY

- Automatic transfer of patient information, corneal data and iris imaging
- Integrated ocular surface visualization

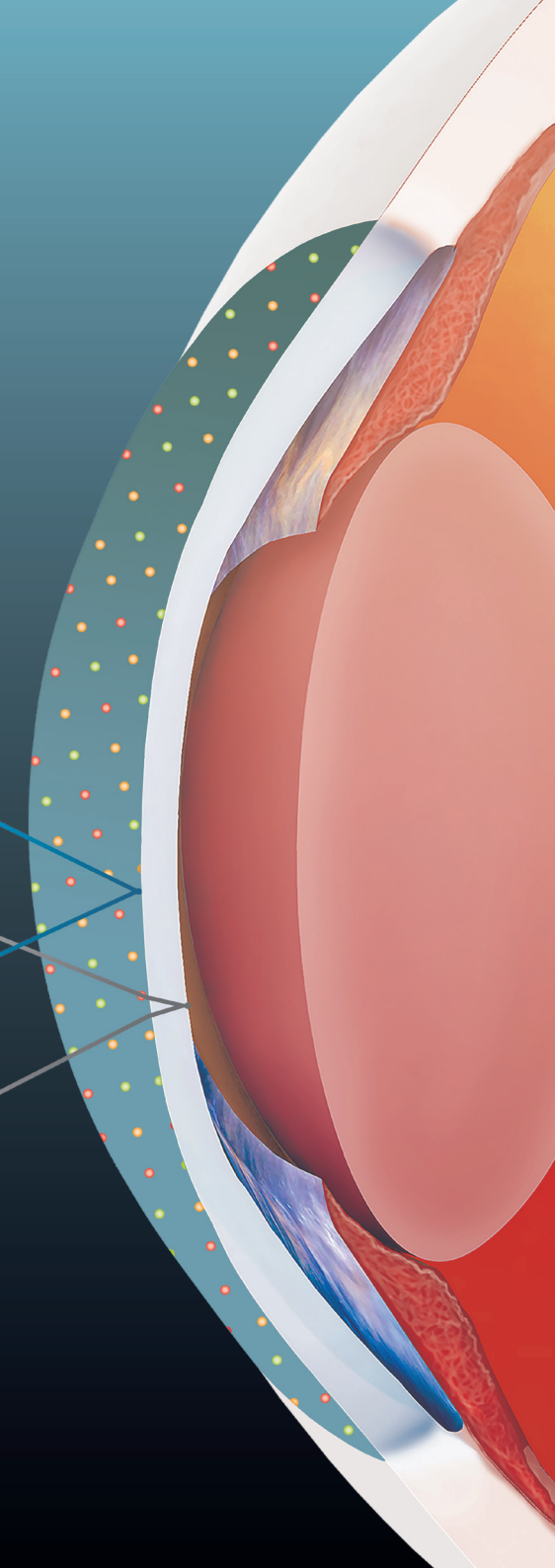
ACCURACY

- Reliable results with trusted Total Corneal Astigmatism LED topography
- Individual posterior corneal astigmatism measurements
- Accurate astigmatism correction with precise toric axis alignment



Multi-colored
LED point-to-point
raytracing

2nd Purkinje
point-to-point
raytracing technology



WHAT TOP SURGEONS SAY ABOUT CASSINI



"Cassini is a better alternative for toric IOL planning and, as such, stands to pave the way for surgeons who have been hesitant to implant these premium lenses."

Douglas Koch, MD
Baylor College of Medicine, Houston, TX, USA



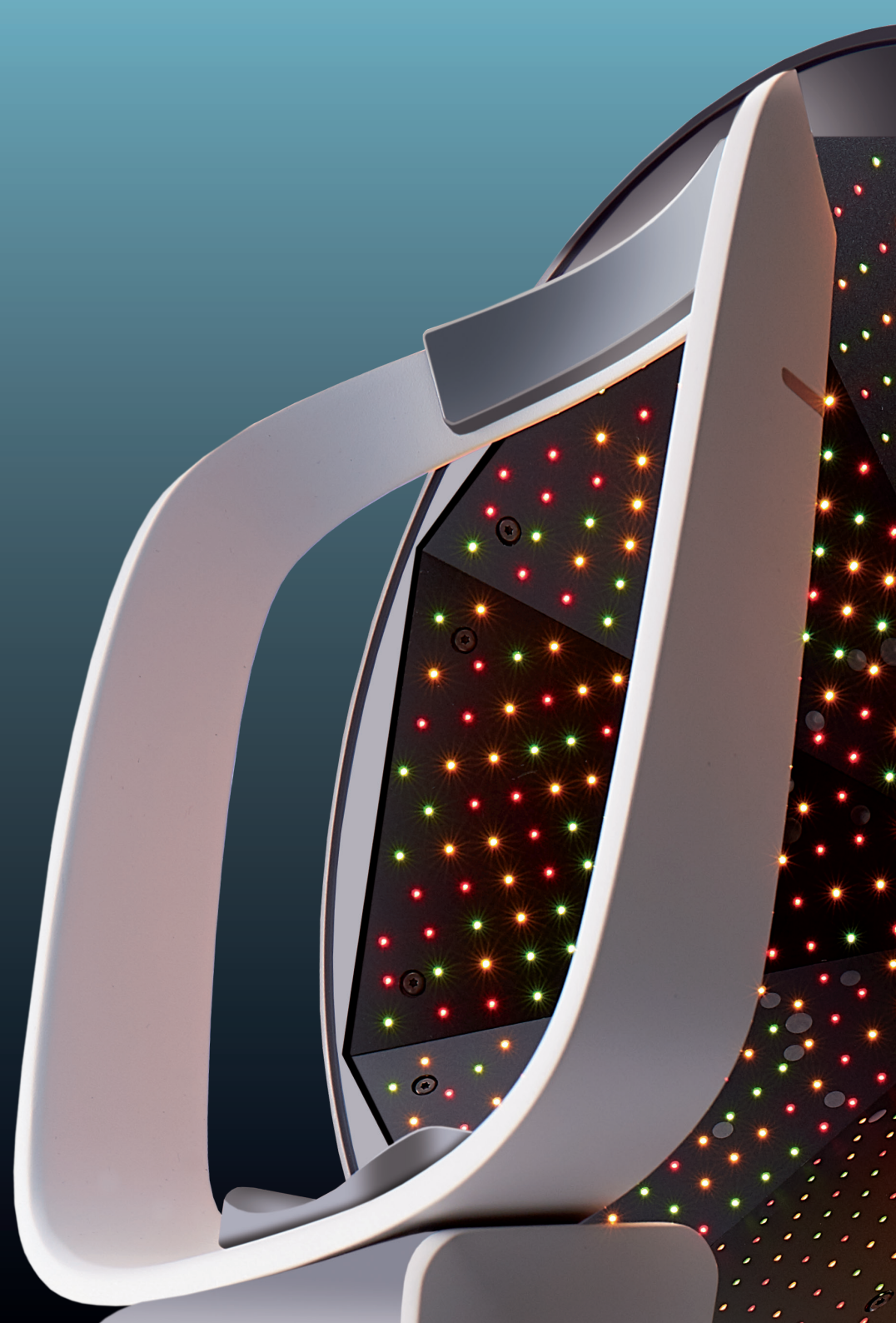
"Superior in central corneal measurement to Placido and Scheimpflug in case of high irregularity."

A. John Kanellopoulos, MD
Laservision Eye Institute, Athens, Greece
New York University Medical School, New York, USA



"Cassini is a game-changer, it's a reliable and great brand that has done amazing things for my practice."

Denise M. Visco, MD, MBA
Eyes of York, PA, USA
President, American College of Eye Surgeons



CASSINI SPECIFICATIONS

Submicron accuracy with up to 700 ambient multicolor LEDs combined with 2nd Purkinje raytracing technology

Anterior axis repeatability within 3 degrees⁸

Keratometric data display of Steep, Flat and Average in Diopters and millimeters for anterior, posterior and Total Corneal Astigmatism (TCA)

Topographic indices: Shape factor (E), eccentricity (e), Asphericity (Q) and form factor (p)

Topography mapping: Axial, Refractive, Tangential and Elevation

Multiple color keys for topography map customization

Keratoconus screening indices: Surface Asymmetry Index (SAI) and Surface Regularity Index (SRI)

Corneal aberrations with individual Zernike terms and total HOA parameter display

Multifocal IOL suitability module with White-to-White, Pupillometry and relevant angles

External Ocular Photography

Incorporated ocular surface screening and visualization application

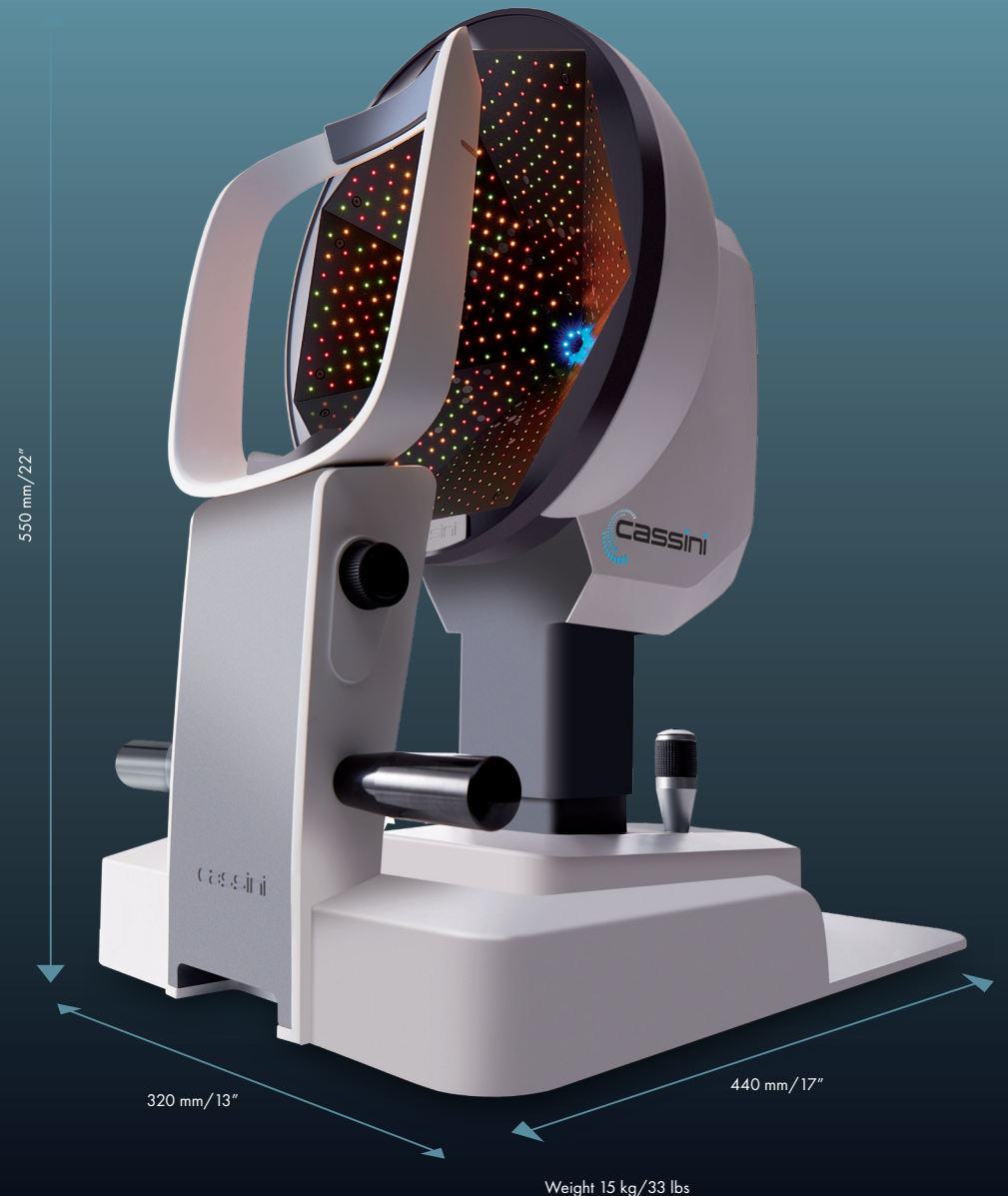
Automated and manual capturing with joystick positioning on visual axis

Accuracy verification with Quality Factors

Seamless connectivity for Femtosecond Laser Assisted Cataract Surgery (FLACS) platforms

Seamless patient management with various clinical report export options: DICOM, USB, Wi-Fi and PDF

CONTACT US TO TRADE-IN YOUR CASSINI FOR THE EVOLVED
AND ALL-NEW CASSINI AMBIENT



REFERENCES

- ^{1,2} RO Staff, Cataract Patients Carry Significant Burden of Pre-op Astigmatism, Review of Optometry, October 2018.
- ^{3,4} Steven J. Dell, MD, Comoderator; Stephen G. Slade, MD, FACS, Comoderator; J. Andy Corley; John F. Doane, MD; Kendall E. Donaldson, MD, MS; Guy M. Kezirian, MD; Vance Thompson, MD, FACS; Kenneth J. Rosenthal, MD, FACS; Bennett Walton, MD, MBA; William F. Wiley, MD. Cataract & Refractive Surgery Today, The Premium IOL Channel Pitfalls Prospects, May 2018, Market Scope 2019, IOL Market Report, April 2019. (Estimated values as rates vary by region.)
- ^{5,6} Shareef Mahdavi, Stephen Daily. What Is Holding Back the Premium IOL Channel's Growth? A major factor is physicians' own hesitation, by Stephen Daily. Cataract & Refractive Surgery Today, January 2012.
- ^{7,8} A. John Kanellopoulos, MD; George Asimellis, PhD; and David W. Friess, OD. The Clinical Impact of Color LED Topographic Variability Analysis. An ongoing evaluation of large data sets to improve patients' outcomes. Cataract & Refractive Surgery Today, April 2014.

Disclaimer: Cassini promotional content is not a substitute for medical diagnosis and treatment. We do not assume and hereby disclaim any liability to any party for any loss, damage or disruption caused by errors and omissions with regards to insights and/or advice and/or opinions and/or training shared.

cassini
The world in vision



www.cassini-technologies.com



+1 (786) 973 1914



@cassinitca

Cassini USA - +1 888 660 6965

Cassini Global - +31 70 399 31 12

info@cassini-technologies.com - www.cassini-technologies.com

Cassini Technologies BV, Anna van Buerenplein 40A, 2595DA, The Hague, The Netherlands